

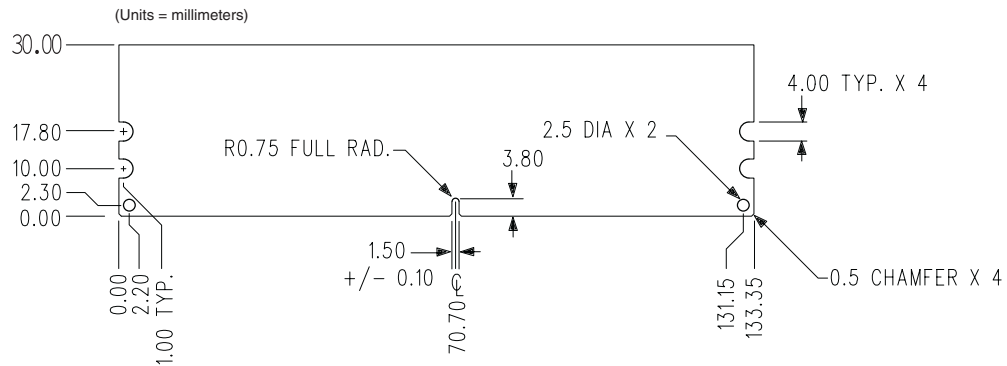
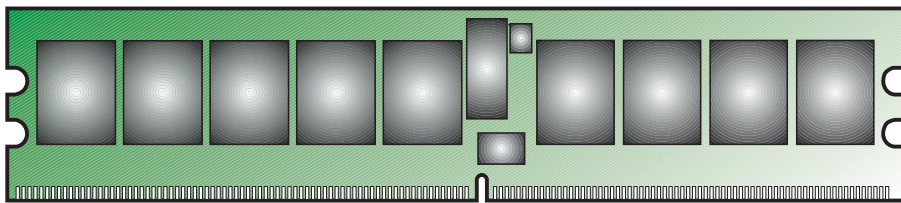
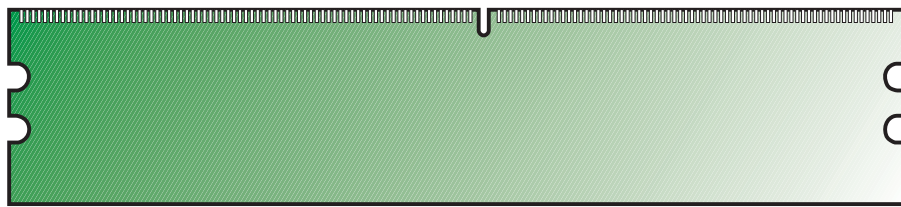
**KVR800D2S8P6/1G**  
**1GB 128M x 72-Bit DDR2-800**  
**CL6 Registered w/Parity 240-Pin DIMM**

**DESCRIPTION:**

This document describes ValueRAM's 128M x 72-bit 1GB (1024MB) DDR2-800 CL6 SDRAM (Synchronous **DRAM**) "single rank" Registered w/Parity memory module. The components on this module include nine 128M x 8-bit DDR2-800 SDRAM in FBGA packages. This 240-pin DIMM uses gold contact fingers and requires +1.8V. The electrical and mechanical specifications are as follows:

**FEATURES:**

|   |                               |
|---|-------------------------------|
| ✓ Clock Cycle Time (tCK) CL=6                   | 2.5ns (min.) / 8ns (max.)     |
| ✓ Row Cycle Time (tRC)                          | 60ns (min.)                   |
| ✓ Refresh to Active/Refresh Command Time (tRFC) | 127.5ns                       |
| ✓ Row Active Time (tRAS)                        | 45ns (min.) / 70,000ns (max.) |
| ✓ Single Power Supply of                        | +1.8V (+/- .1V)               |
| ✓ Power   | 2.277 W (operating)           |
| ✓ UL Rating                                     | 94 V - 0                      |



*Figure 1: KVR800D2S8P6/1G 240-Pin DIMM*